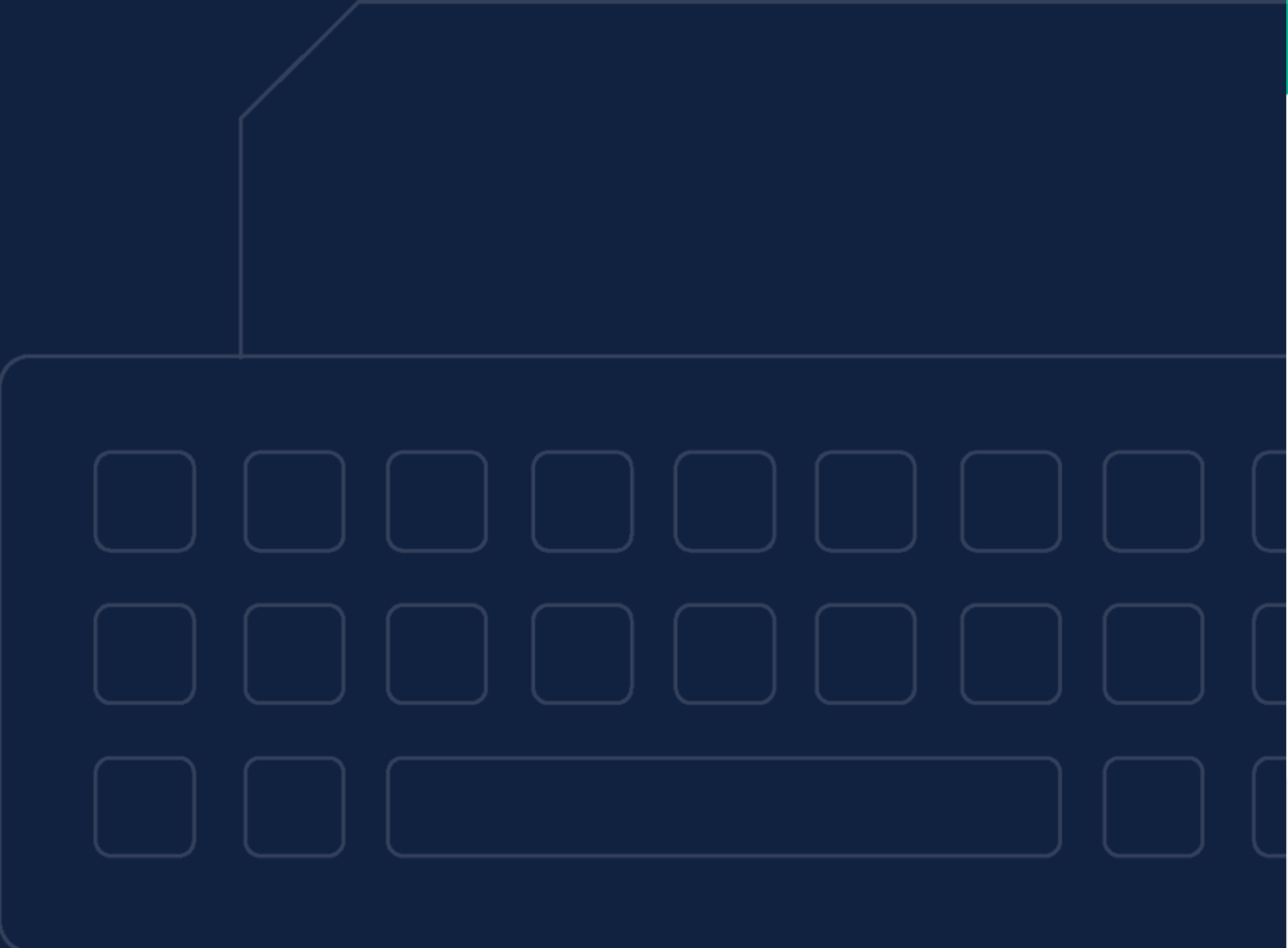


- your security dream team

How MJ Insurance and Trava are Helping You Rest Easy



TRAVA



As the world becomes increasingly digitized, the risk of cyber-attacks and data breaches continues to rise. For MJ Insurance, providing their clients with the strongest solutions in the face of these challenges means staying ahead of the curve.

That's why they partnered with the best in the business - experts in cyber risk management who can uncomplicate cybersecurity priorities for SMBs and insurance agencies. MJ needed a partner with cutting-edge risk assessment and vulnerability management tools and an incomparable understanding of security measures and protocol development. This is where Trava enters the picture.

Creating The Dream Team

By partnering with Trava, MJ Insurance gained a powerful ally in its mission to provide clients with top-notch cybersecurity solutions. Each partner brings unique expertise and tools to the table, resulting in a true dream team collaboration.

Trava's innovative software, including a personalized control survey tool and network scans, allow potential cyber risks to be identified and addressed proactively. These enhanced features enable MJ to work with clients to develop effective policies and procedures that provide superior results.

"I'm much more intelligent than I would ever have been. The help deciphering some variances from our scans has been immensely beneficial across the MJ organization," says Adam Adler, Client Executive at MJ Insurance.

Cyber Game Changers

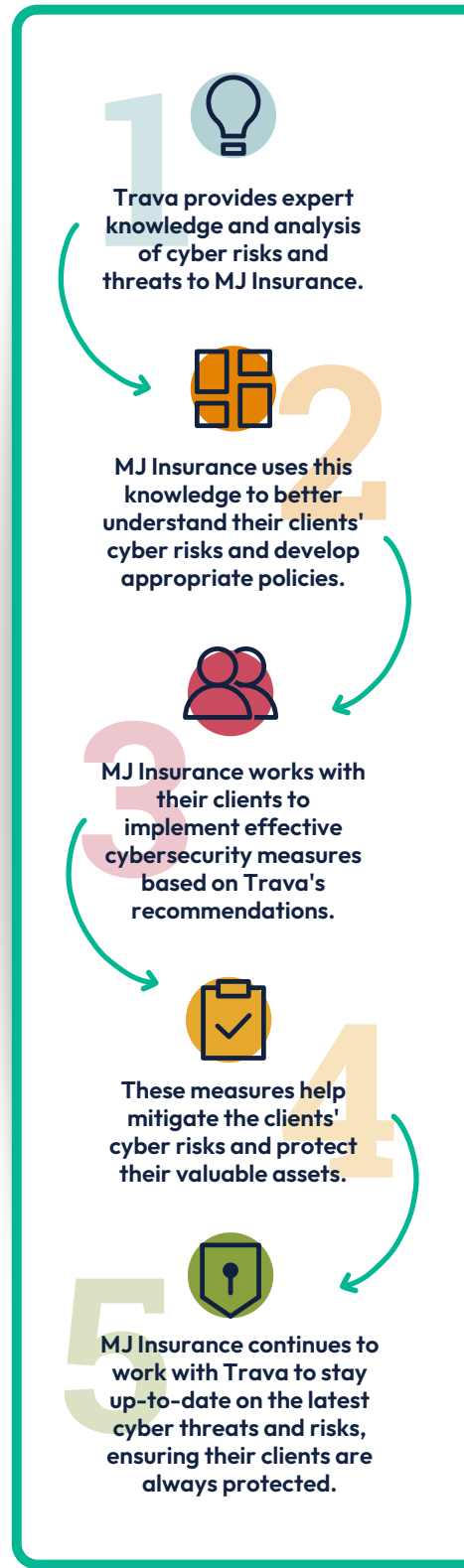
The MJ Insurance+Trava partnership is a game-changer in the world of cyber security, bringing together two powerhouses to provide unparalleled client experiences and solutions.

Trava's revolutionary software tools allow tailored recommendations for MJ Insurance clients, ensuring that they receive an experience catering to their specific needs. This customized approach simplifies compliance and offers dependable insights for policy renewals, empowering organizations with the tools and knowledge they need to navigate the ever-changing cyber risk landscape.

"We couldn't have done it without Trava. Their partnership and expertise have helped us become smarter and more proactive in managing cyber risk for our clients."

—Adam Adler, Client Executive at MJ Insurance

MJ Insurance and Trava provide a rock-solid cyber security approach, giving clients the peace of mind they need to rest easy.





MJ Insurance has been in the insurance game for 60 years, with offices in Indiana, Arizona, and Colorado. As the largest independent insurance agency based in Indiana, MJ Insurance works with various middle-market organizations across industries.

[Contact MJ Insurance](#)



Trava simplifies cybersecurity for SMBs and insurance agencies with risk assessment and vulnerability management tools. Stay compliant effortlessly, with reliable insights for policy renewals. Say goodbye to cybersecurity worries and hello to Trava, your trusted advisor.

[Talk to Trava](#)

